

IRONWORKER ACCESSORIES

48" AUTO CUT

Production cutting for
repeatable lengths

SHOWN WITHOUT SAFETY GUARDS FOR CLARITY



STRIPPER REDUCING PLATE

Use with smaller punches and thinner material

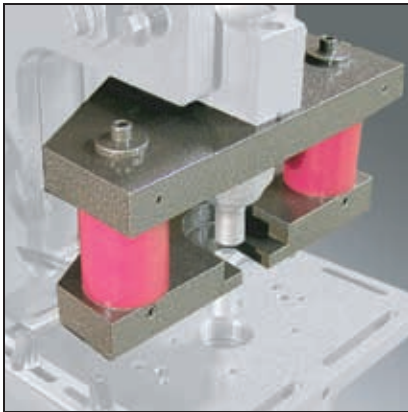


48" MANUAL BACK GAUGE

Cut repeatable lengths of angle and flat stock

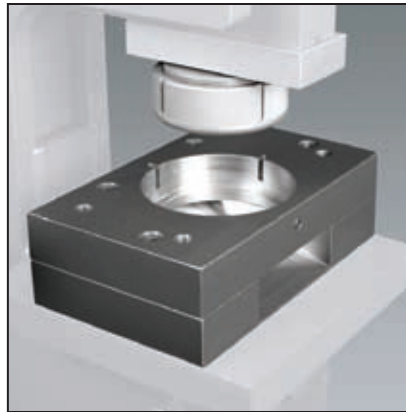


Available in oversize



URETHANE STRIPPER

Ideal for sheet metal fabrication



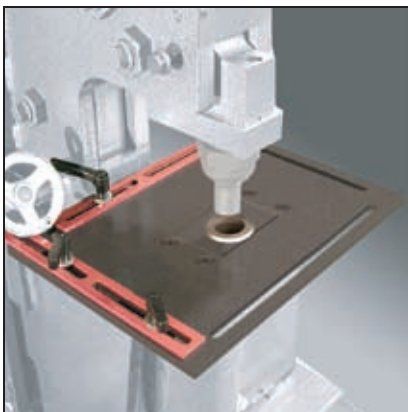
241 PUNCH STATION

Ideal for punching large format
and patterned holes



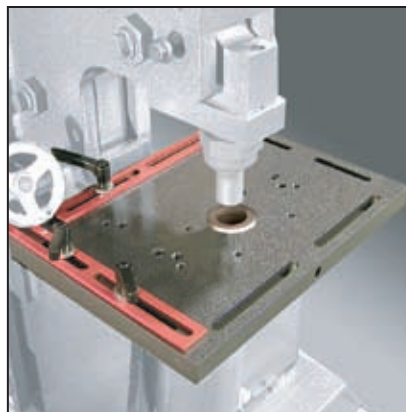
ELECTRIC STROKE CONTROL

Increase production from your punch,
notch or shear stations



GAUGING TABLE KIT

3/8" x 12" x 16", bolts to Pedestal Die Table,
includes one short and one long fence,
custom sizes available



HEAVY DUTY GAUGING TABLE KIT

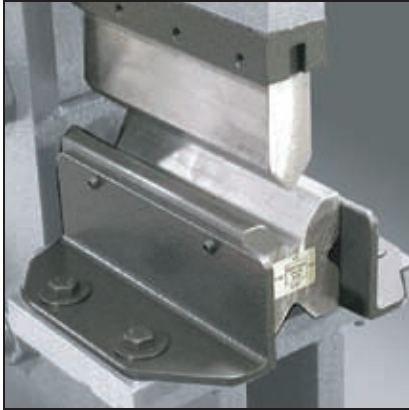
1" x 12" x 16", includes one short and
one long fence, available in oversize





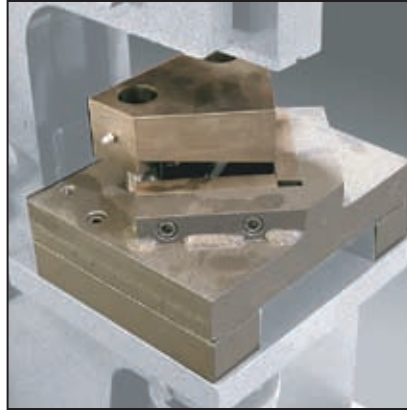
IRONWORKER OPTIONAL TOOLING

SHOWN WITHOUT SAFETY GUARDS FOR CLARITY



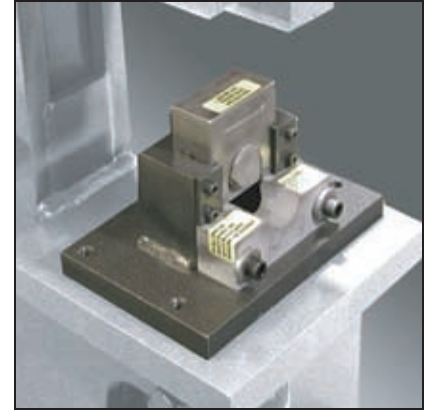
BRAKE

In 7", 8", 10" and 12" lengths* — includes a standard "punch" and a four-way die for braking 1/16", 1/8", 3/16", and 1/4" material to a 90° angle



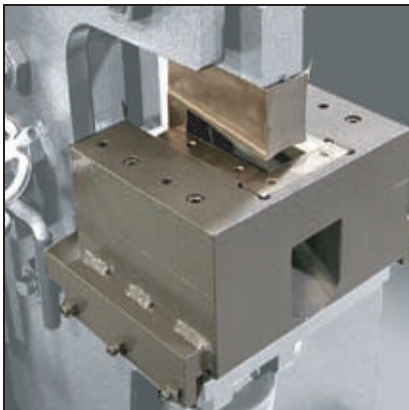
ANGLE NOTCHER

Tooling takes a precise 92° notch from the bottom leg of angle iron up to 3" x 3" x 1/4" maximum



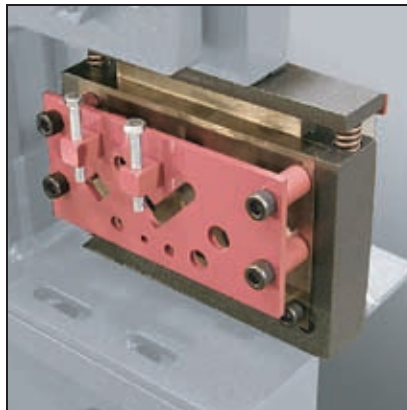
PIPE NOTCHER

Designed for perfect saddle joint connections in schedule-40 pipe 1/2" - 2" diam. (schedule-80 available as special order)



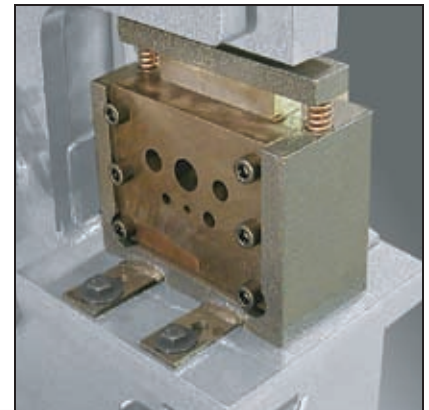
COPER/NOTCHER

Allows for a small "nibble" or a large notch to be taken out of plate, bar stock, or angle*



MULTI SHEAR

Angle Shear: 2" x 2" x 1/4"
Bar Shear: 1/4" x 6"
Rod Shear / Round: 1/4", 3/8", 1/2", 5/8", 3/4"
Rod Shear / Square: 13/16"



ROD SHEAR

For a more precise cut on your round stock sizes 1/4", 3/8", 1/2", 5/8", 3/4", 1"

Tooling to punch, notch and cut flats, rounds, and angles. EDWARDS IRONWORKERS give you the capacity and flexibility to power through the toughest fabrication jobs without exhausting your budget.

**WORK MORE
IRON
FOR LESS COIN**



* ACCESSORY SIZE/CAPACITY VARIES BY MACHINE

EDWARDS MFG. CO. P.O. BOX 166, ALBERT LEA, MN 56007